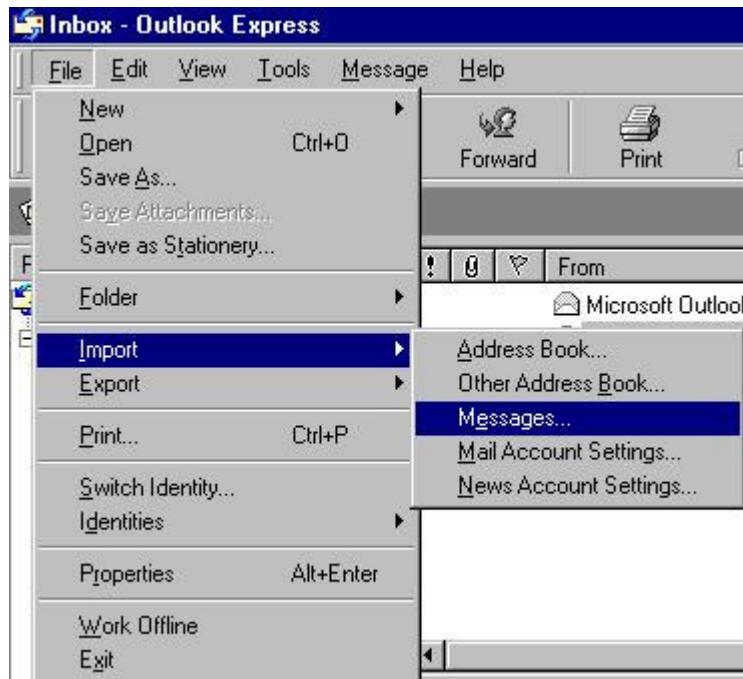


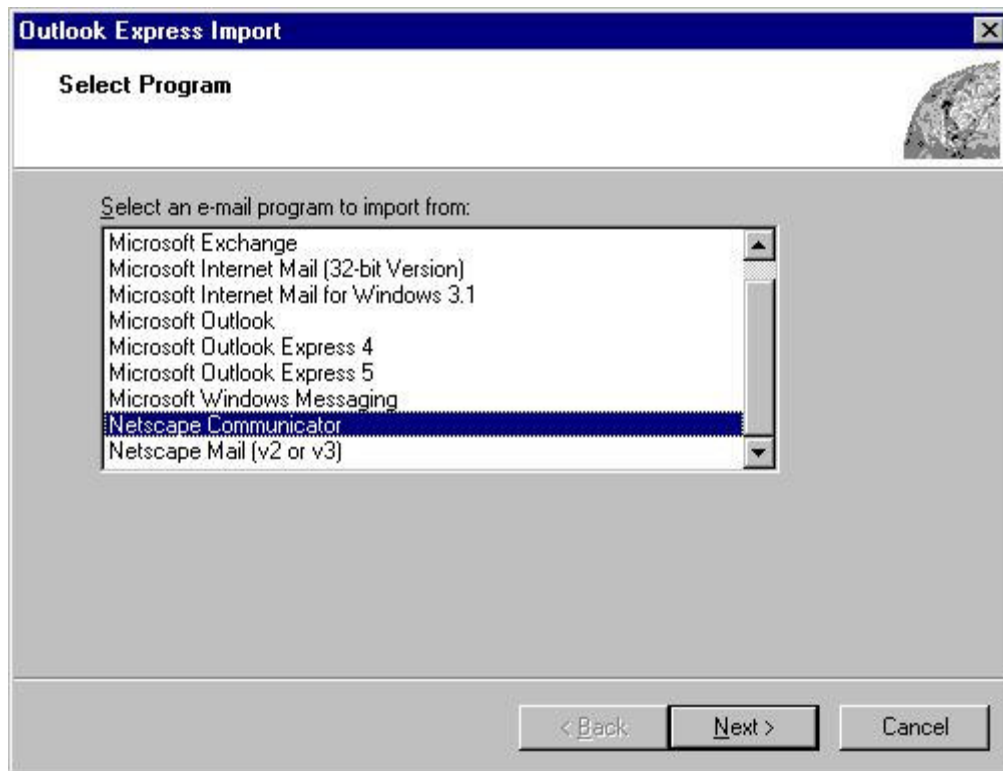
Moving Email from Netscape Messenger to Outlook Express

In order to move Email from **Netscape Messenger** to **Outlook Express**, you will need to do the following:

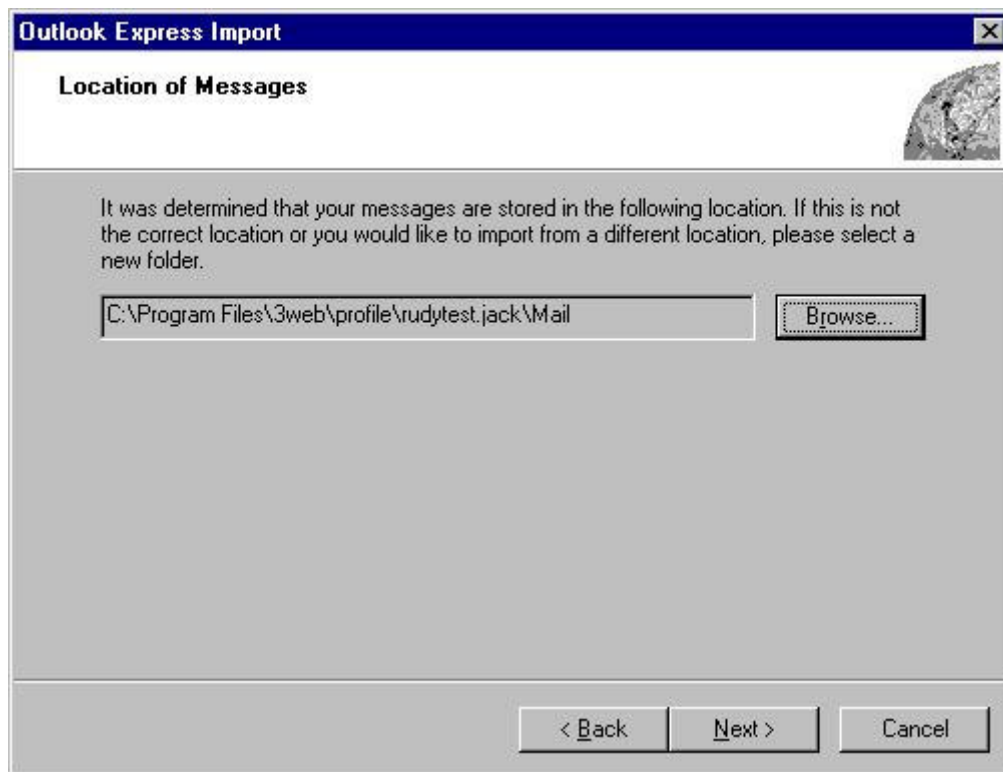
1. Open **Outlook Express**.
2. Click **File**, then **Import**, and then **Messages...**



3. Select **Netscape Communicator** and click **Next**.



4. Verify that your messages are stored in the displayed location, and click **Next**.



If the location of your messages is not displayed, it can be located in one of the following folders:

Windows 98

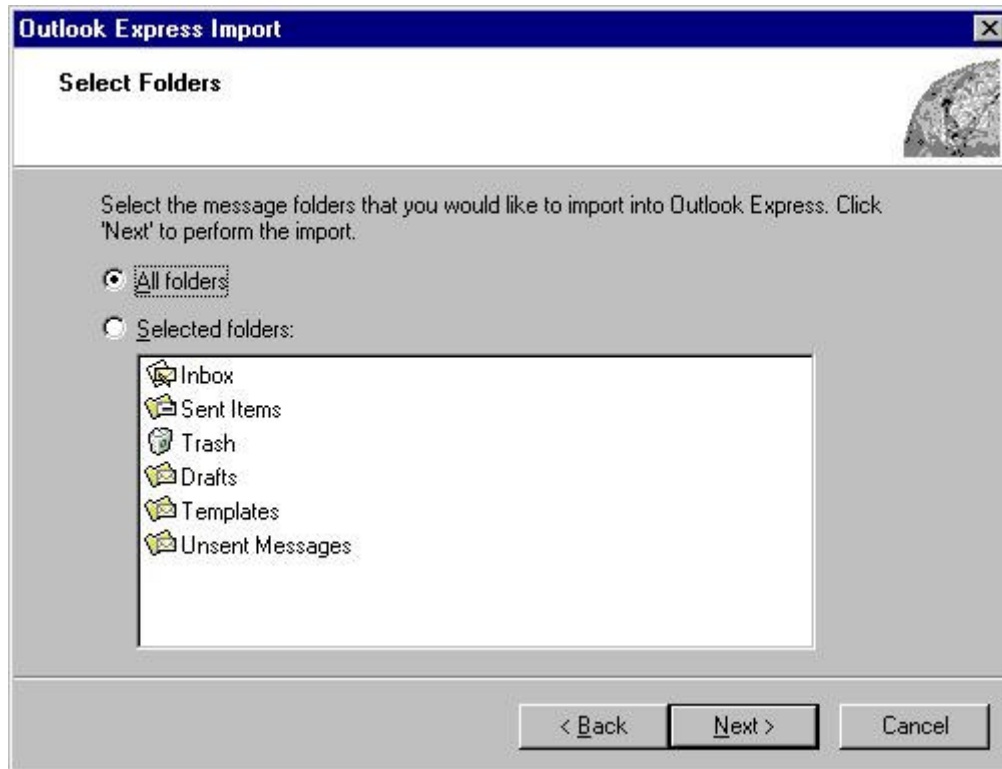
- 1) C:\Program Files\3web\profile\\Mail

Windows 2000 and XP – either:

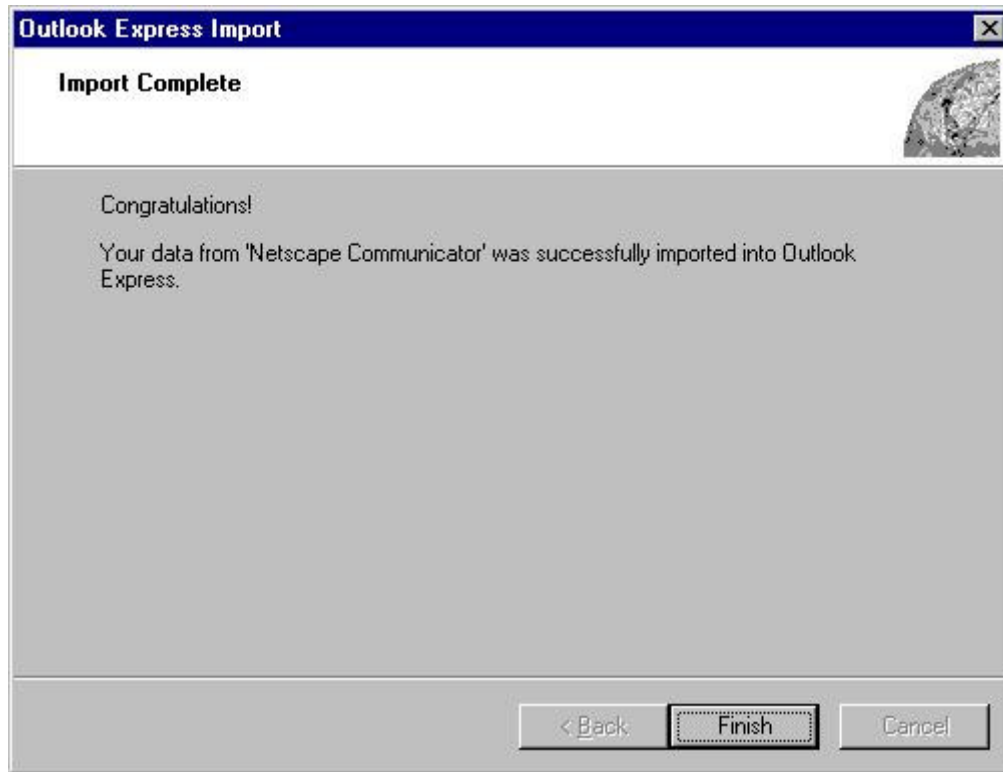
- 1) C:\Documents and Settings\All Users\WINNT\Application Data\Cybersurf\3web\profile\ or
- 2) C:\WINDOWS\All Users\Application Data\Cybersurf\3web\profile

This will depend entirely on how you have your Windows 2000 or XP machine set up.

5. Select the folders you wish to import and click **Next**.



6. Click **Finish** to import your Email into **Outlook Express**.



7. All Email selected from your **Netscape Communicator** account will now appear in **Outlook Express**.